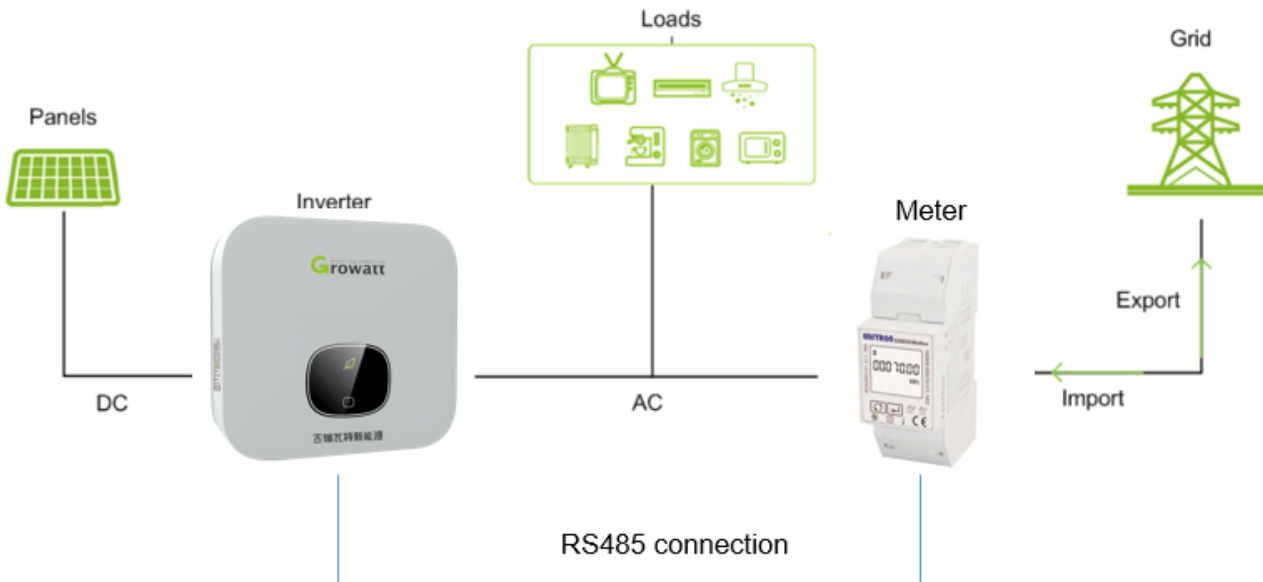


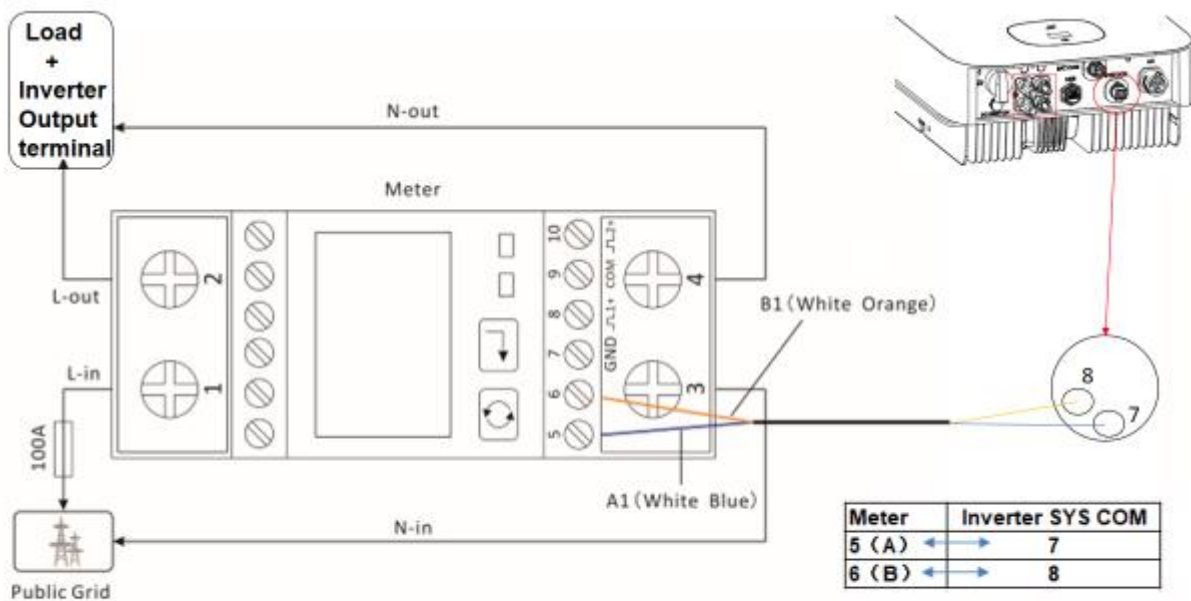
# Growatt TL-X model Export Limitation Guide

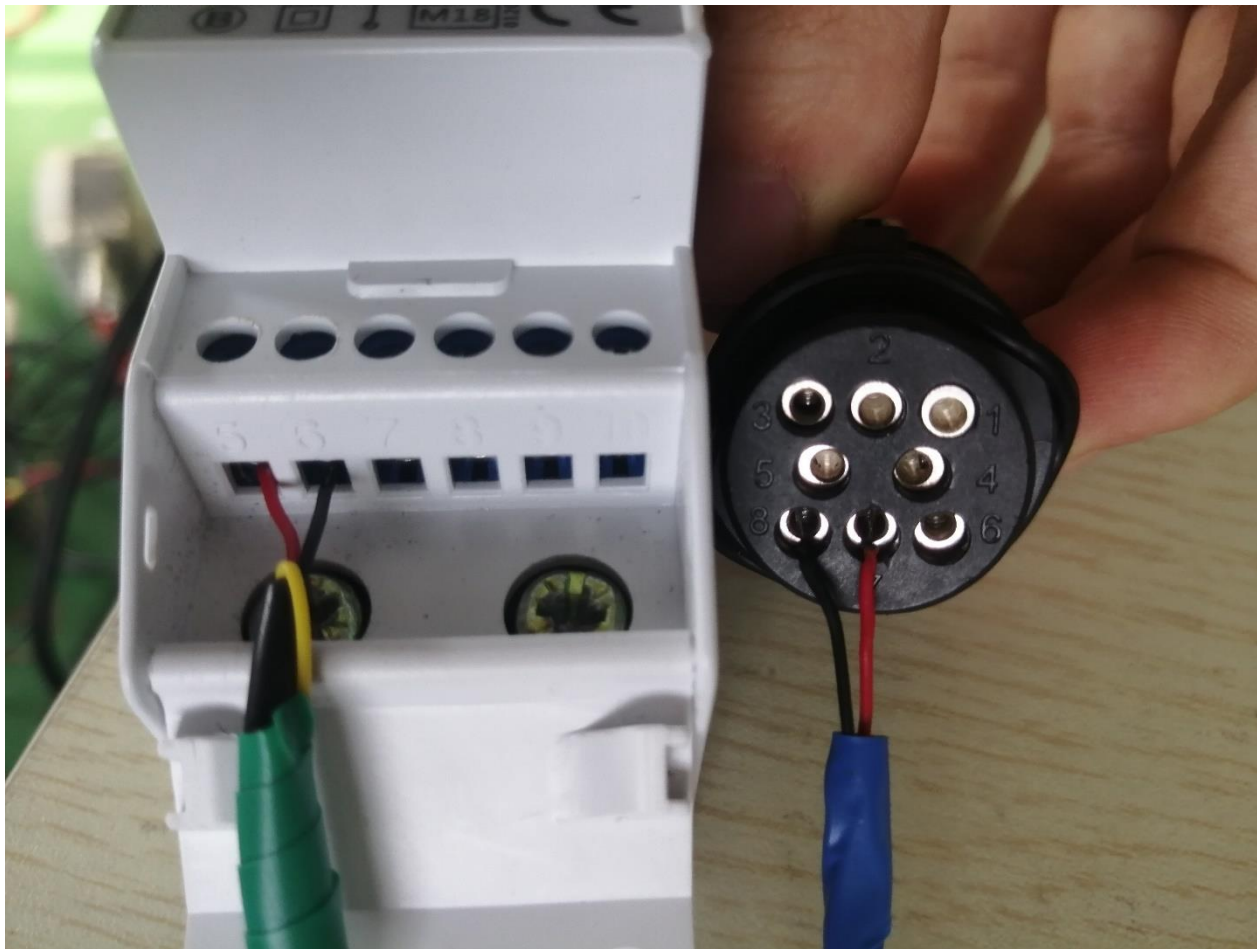
## 1, System diagram:



**Note: the meter should install between load and grid.**

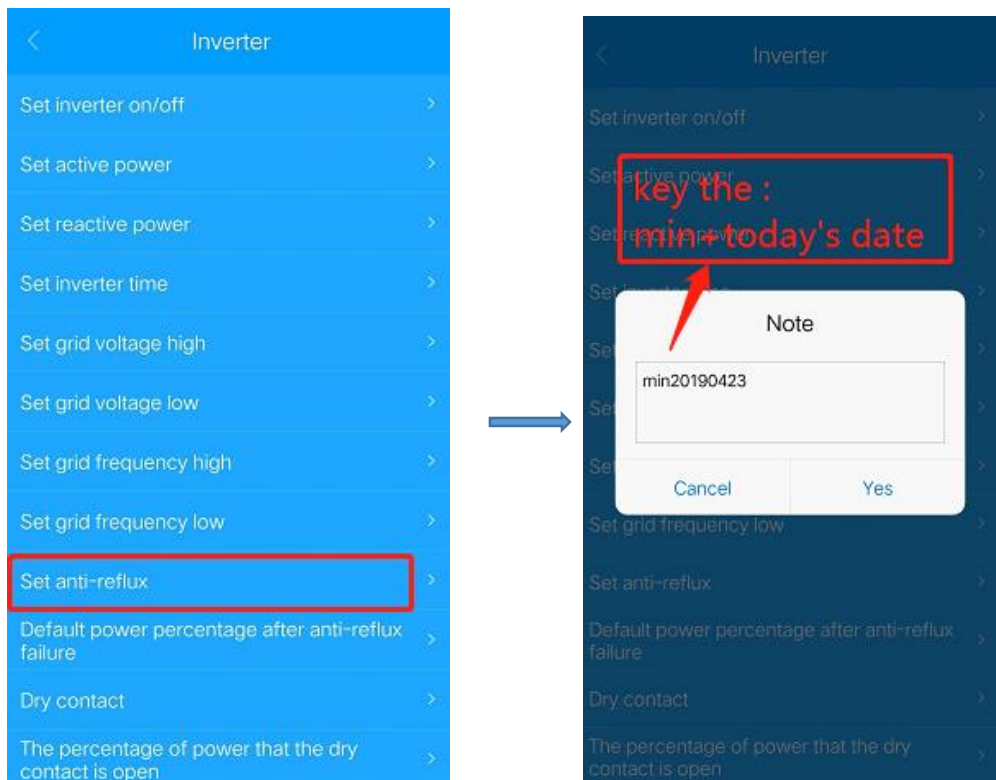
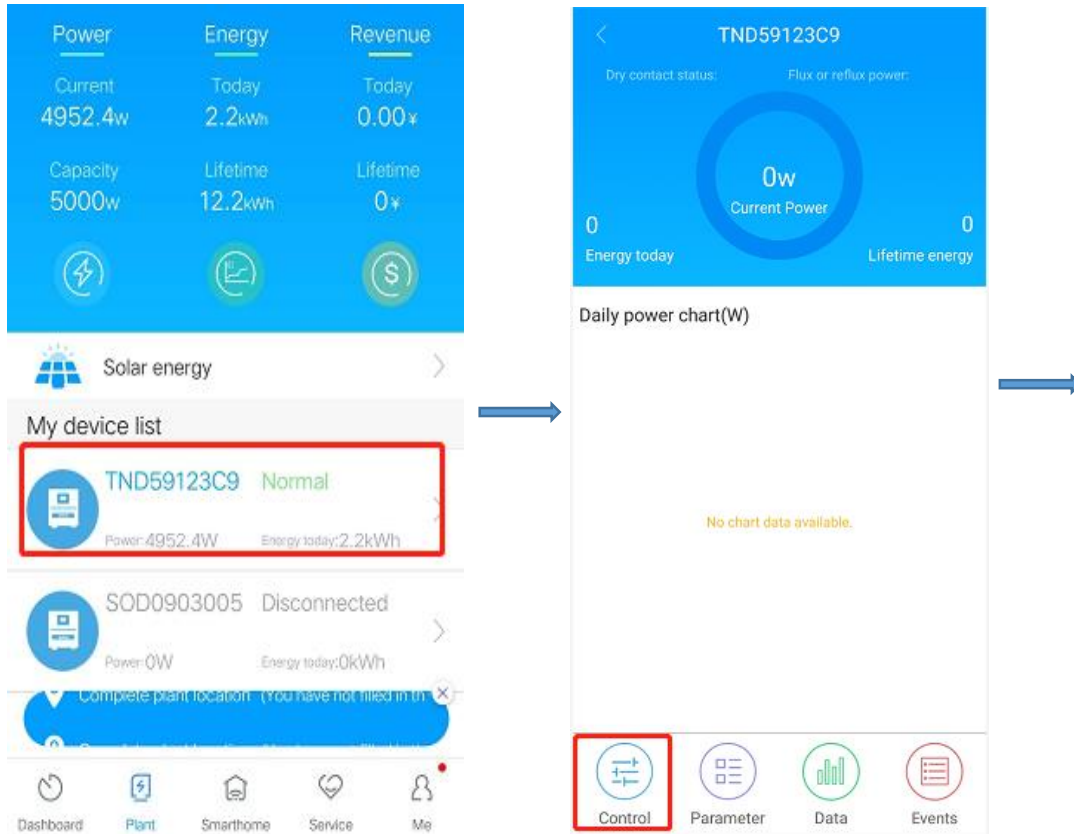
## 2, Meter connect:



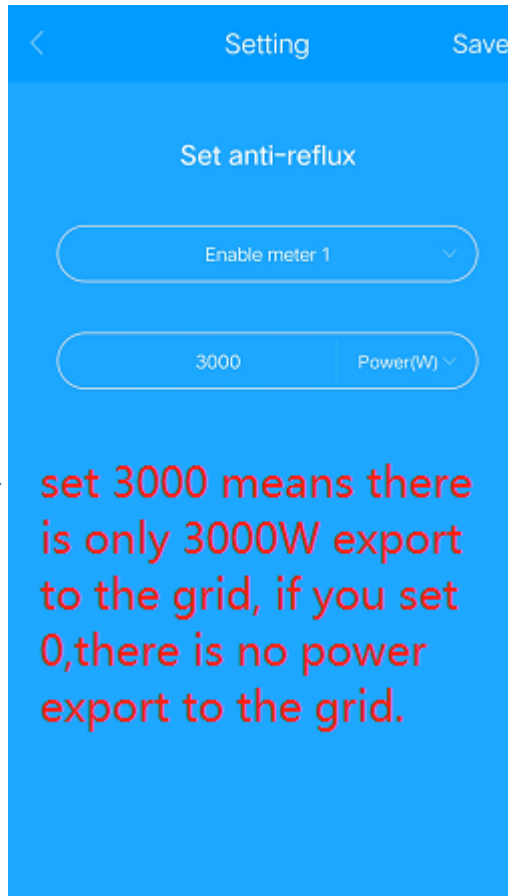
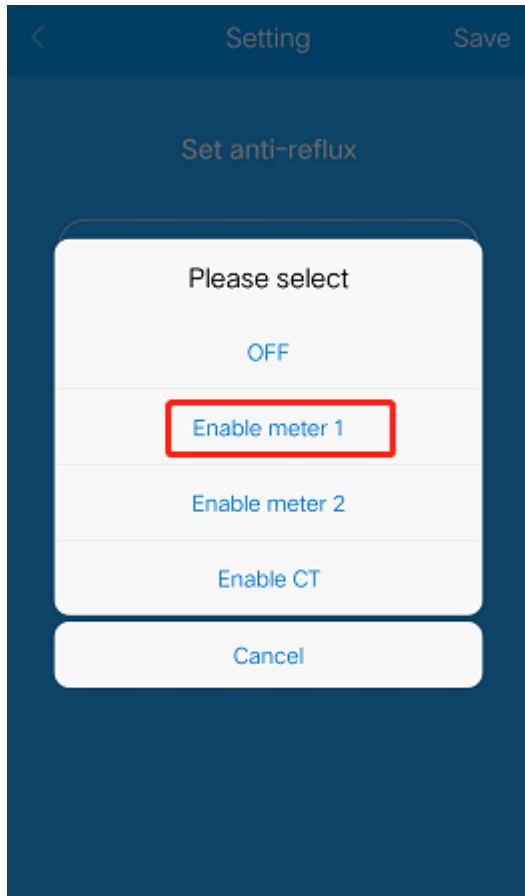


### 3,parameter setting:

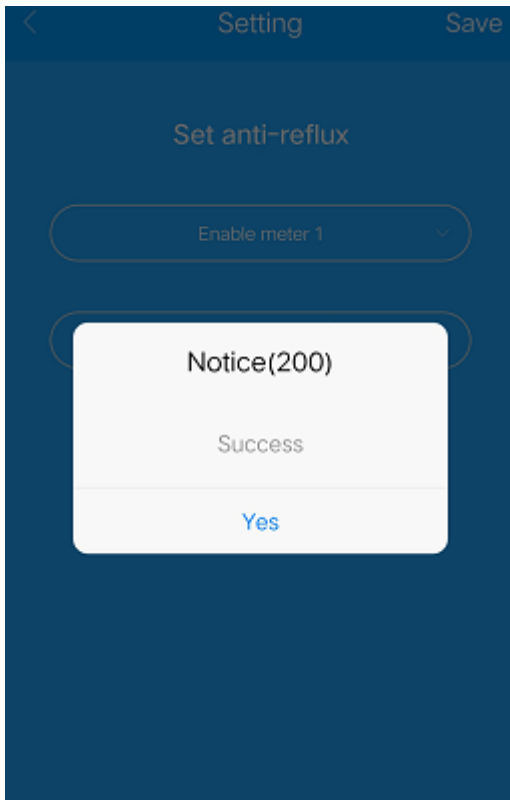
**A:**Export limitation parameter setting by the “shinephone”APP, After install the monitoring device, open the “shinephone” APP, operate it as follow step:



**key the password:min+today's date**



**3000 means 3000W export to the grid**

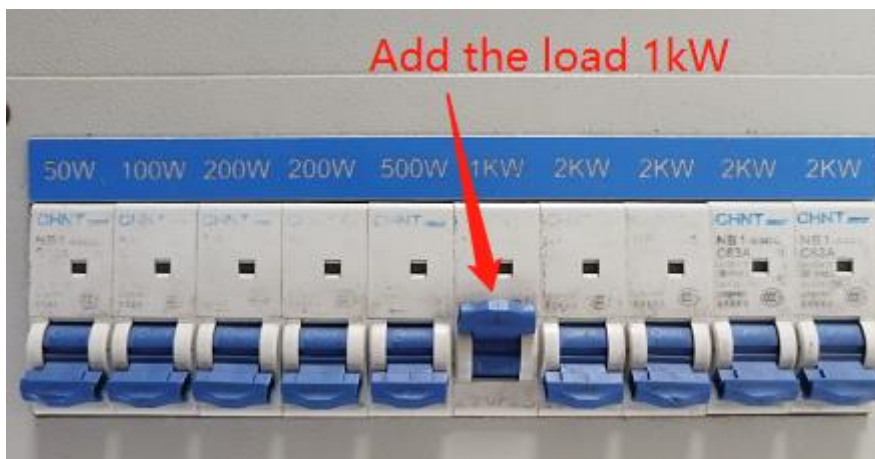






The meter detect the export power to the grid is 3000W

**B:**When add the 1kW load ,and export the grid 3kW, then the PV inverter will output 4kW totally:





**4051W means the inverter output 4kW power totally (load 1kW + grid 3kW )**