

PRODUCT

MC4 1000V

PRODUCT FEATURE& SPECIFICATIONS

MC 4



PV-KBT 4



PV-KST 4



Order No.	Type	Female Cable	Male Cable Coupler	Ø Range Of Cable Gland	Conductor cross Section			Crimping tool	Contacts per reel2
					A (mm)	mm ²	AWG		
32.0014P2000-UR	PV-KBT4/6I-UR	x		3-6	4; 6	12; 10	5	1)	2000
32.0015P2000-UR	PV-KST4/6I-UR		x	3-6	4; 6	12; 10	5	1)	2000

Technical data			
Connector system	Ø 4 mm		
Rated voltage	1000 V DC (IEC 62852) 1500 V DC (2Pfg2330) ¹⁾ 1500 V DC (UL) ²⁾		
Rated current TÜV (85°C)	22.5 A (2.5 mm ²)	45 A (10 mm ²)	39 A (4 mm ² /6 mm ²)

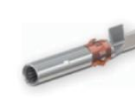
Rated current UL	30 A (14 AWG)	50 A (8 AWG)	30 A (12 AWG/10 AWG)
Rated impulse voltage	12 kV (1000 V DC (TÜV)) 16 kV (1500 V DC (TÜV))		
Ambient temperature range	-40°C...+85°C (TÜV) -40°C...+75°C (UL)		
Upper limiting temperature	105°C (TÜV)		
Degree of protection, mated unmated	IP65, IP68 (1 h / 1 m) IP2X		
Overvoltage category / Pollution degree	CATIII / 3		
Contact resistance of plug connectors	≤ 0.25 mΩ		
Safety class	1000 V DC: II 1500 V DC: 0		
Contact system	MULTILAM		
Type of termination	Crimping		
Contact material	Copper, tin plated		
Insulation material	PC / PA		
Locking system (UL)	Locking type		
Flame class	UL94-V0		
Ammonia resistance (acc. to DLG)	1500 h, 70°C / 70% RH, 750 ppm		
Salt mist spray test, degree of severity 6	IEC 60068-2-52		
TÜV-Rheinland certified	R60127190 ²⁾		
in accordance with IEC 62852			
TÜV-Rheinland certified	R60087448		
in accordance with 2PFG2330			
UL recognized component	E343181		
in accordance with UL 6703			
CSA certified, in accordance with UL 6703	250725		
CQC certified according CNCA/CTS0002-2012	CQC16024138286		

PRODUCT

MC4 EVO2 1500V



PV-KBT4-EVO 2/...-UR



PV-KST4-EVO 2/...-UR



Order No.	Type	Female cable coupler	Male Cable Coupler	Ø range of cable gland	Conductor cross Section		
					A (mm)	mm ²	AWG
32.0086P0001-UR	PV-KBT4-EVO 2/6I-UR	x		4.7-6.1	4; 6	12; 10	2000
32.0087P0001-UR	PV-KST4-EVO 2/6I-UR		x	4.7-6.1	4; 6	12; 10	2000

Technical data	
Connector system	Ø 4 mm
Rated current TÜV (85°C)	1500 V DC (TÜV) ¹⁾ 1500 V DC (UL) ²⁾ 1500 V DC (JET) ³⁾
Rated current TÜV (85°C)	39 A (2,5 mm ² / 14 AWG) 45 A (4,0 mm ² / 12 AWG) 53 A (6,0 mm ² / 10 AWG) 69 A (10,0 mm ² / 8 AWG)
Rated impulse voltage	16 kV (1500 V)
Ambient temperature range	-40°C ... +85°C (TÜV / UL)
Upper limiting temperature	115°C (TÜV)

Degree of protection, mated unmated	IP65 / IP68 (1h / 1m) IP2X
Overvoltage category / Pollution degree	CAT III / 3
Contact resistance of plug connectors	≤ 0.2 mΩ
Safety class	II
Contact system	MULTILAM
Type of termination	Crimping
Contact material	Copper, tin plated
Insulation material	PA
Locking system (UL)	Locking type
Flame class	UL94-V0
Ammonia resistance (acc. to TÜV)	Q60095359
Salt mist spray test, degree of severity 6	IEC 60068-2-52
TÜV-Rheinland certified	R60127169
in accordance with IEC 62852	
UL recognized component	E343181
in accordance with UL 6703	
cTÜVus certified according UL 6703	CU 72141256 01
JET certified according IEC 61730-1:2004	B13T0062

PRODUCT

BRANCH SOCKET& PLUG



PV-KBT4

PV-KST4

Order No.	Type	Description
32.0018	PV-AZB4	Branch socket
32.0019	PV-AZS4	Branch plug

Rated current UL	
Connector system	Ø 4 mm
Rated voltage	1000 V DC (UL)
Rated current	50 A
Rated impulse voltage	12 kV
Ambient temperature range	-40°C...+85°C (UL)
Upper limiting temperature	105°C (Stäubli)
Degree of protection, mated unmated	IP67 IP2X
Overvoltage category / Pollution degree	CATIII / 2
Contact resistance of plug connectors	≤ 0.5 mΩ
Safety class	II
Contact system	MULTILAM
Contact material	Copper, tin plated
Insulation material	PC
Locking system (UL)	Locking type
Flame class	UL94-V0
UL recognized component, in accordance with UL 6703	E343181

PACKING DETAIL

Item Name	Weight	Pack Size	Per Bag Pcs/total Pcs Per Packing
PV-KBT4 + PV-KST4 (Carton size)	10kg / carton	40 x 30 x 30	8bags x 100pcs male/female
PV-KBT4 + PV-KST4 (Pallet size)	260kg / pallet	120 x 80 x 100	12 box male+ 12 box female

Item Name	Weight	Pack Size	Per Bag Pcs/total Pcs Per Packing
PV-KBT4-EVO + PV-KST4-EVO(Carton size)	8.5kg / carton	40 x 30 x 30	100pairs x 3 bags
PV-KBT4-EVO + PV-KST4-EVO (Pallet size)	220kg / pallet	120 x 80 x 100	7200pairs/24box

Item Name	Weight	Pack Size	Per Bag Pcs/total Pcs Per Packing
BRANCH	9kg / carton	40 x 30 x 30	70pairs 70 bags